

HIGHGATE

Highgate Volume Control Valve Trim with Metal Cross Handle

HGVC40



SHOWN IN HIGHGATE VOLUME CONTROL VALVE TRIM WITH METAL CROSS HANDLE| HGVC40

TECHNICAL DETAILS

ADA Compliance: Yes
Control Valve Rough-in Depth Maximum: 4 1/4"
Control Valve Rough-in Depth Minimum: 3 1/4"
Diverter Valve Rough-in Depth Maximum: 2.86"
Diverter Valve Rough-in Depth Minimum: 2.23"
Escutcheon Primary Material: Brass
Fittings Hole Diameter: 1 3/8"
Index Color / Finish and Material: White Porcelain
Depth / Width: 3 3/8"
Height: 2 3/8"
Index Marking: Waterworks Studio
Integrated Diverter: N
Integrated Spray: N
Length: 2 3/8"
Number of Handles: One
Pivot: N
Primary Material: Brass
Spout Swivel: N
Spray Included in Unit: N
Suggested Application: Bath

INSPIRATION

Our take on old English style: simple, functional shapes, detailed with white porcelain indices and hexagonal accents for a timeless feel.

CODES & STANDARDS

Code # HGVC40: Complies with ASME A112.18.1/CSA B125.1, ANSI A117.1 ADA. Certified with IAPMO, cUPC & state of MA.

PRODUCT FEATURES

Cross handle with white porcelain index, cast of brass
All finishes available for immediate shipment (subject to availability)
The volume-control wall valve adjusts water flow
Required 1/2" valve rough, item GUV18/GUV19(US), or GU18VC/GU19VC(UK) sold separately.



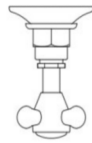
PRODUCT (NOTES)

Requires 1/2" valve rough, item GUSV18R, sold separately.

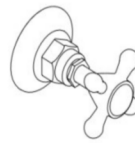
HIGHGATE

HGVC40

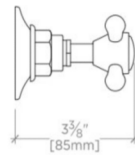
Highgate Volume Control Valve Trim with Metal Cross Handle



TOP VIEW SCALE: 3"=1'-0"



FRONT VIEW SCALE: 3"=1'-0"



SIDE VIEW SCALE: 3"=1'-0"