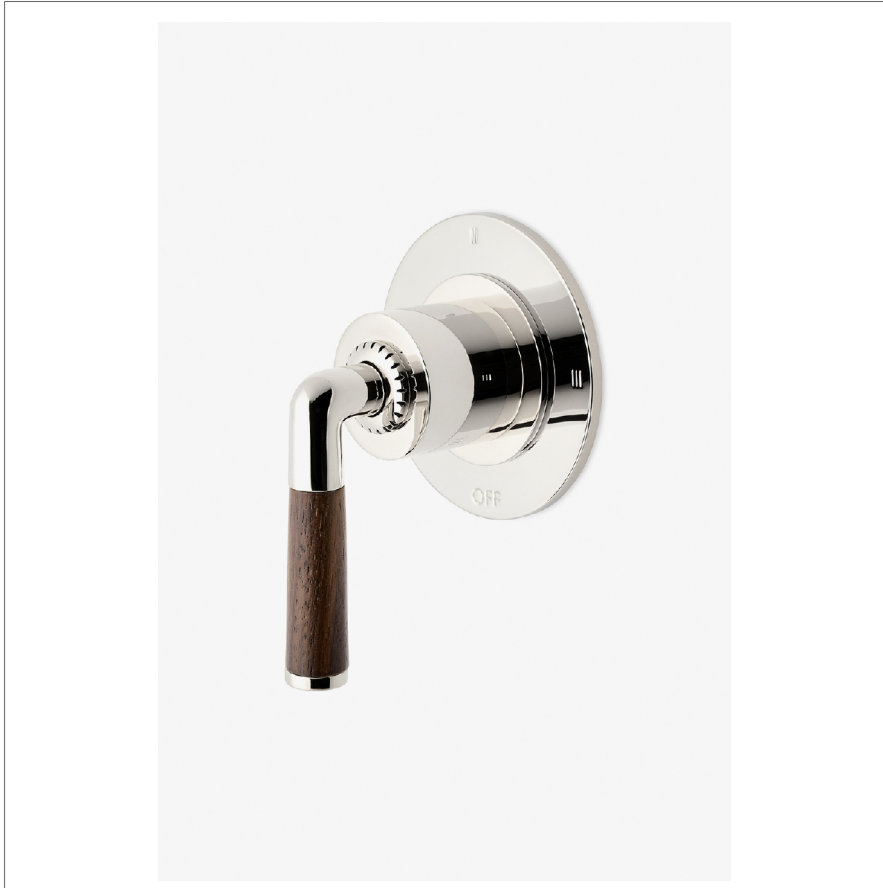


HENRY CHRONOS

CN3T14

Henry Chronos Three Way Diverter Valve Trim for
Thermostatic with Roman Numerals and Walnut Lever
Handle



SHOWN IN HENRY CHRONOS THREE WAY DIVERTER VALVE TRIM FOR THERMOSTATIC WITH ROMAN NUMERALS AND WALNUT LEVER HANDLE | CN3T14

TECHNICAL DETAILS

Fittings Hole Diameter: 2"
Handle Turn Angle: Full Turn
Number Of Holes: One Hole
Primary Material: Brass

INSPIRATION

Inspired by dive watches, Henry Chronos radiates design prowess and technical precision. Chronos retains the design integrity of our original, iconic Henry collection, while imbuing it with modern details and exquisite materials.

CODES & STANDARDS

ASME A112.18.1/CSA B125.1, State of MA

PRODUCT FEATURES

Features Walnut Lever Handle

For Use With a Thermostatic Shower System and Three Waterway Outlets

Features Roman Numerals Representing Outlet Position

Stocked in Brass, Chrome and Nickel

Requires Rough Valve, Sold Separately: GUDV3T

CERTIFICATIONS

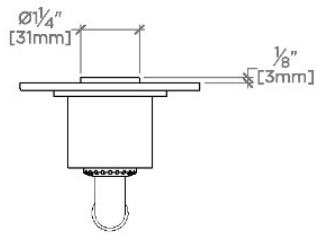


PRODUCT (NOTES)

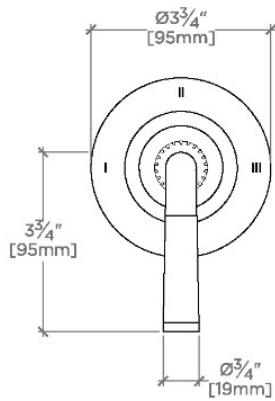
HENRY CHRONOS

CN3T14

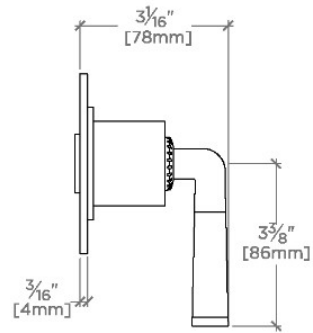
Henry Chronos Three Way Diverter Valve Trim for
Thermostatic with Roman Numerals and Walnut Lever
Handle



TOP VIEW SCALE: 3"=1'-0"



FRONT VIEW SCALE: 3"=1'-0"



SIDE VIEW SCALE: 3"=1'-0"