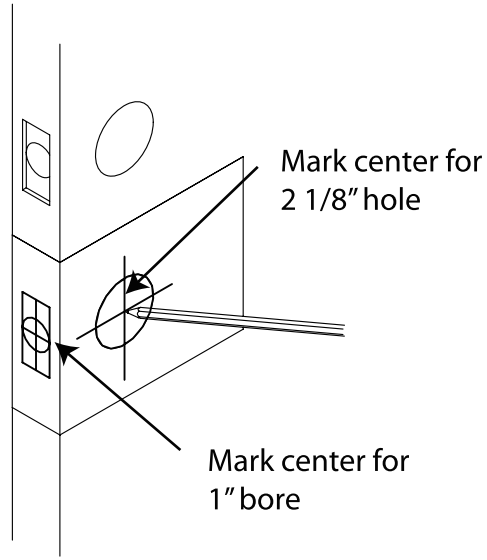


Single Cylinder Deadbolt

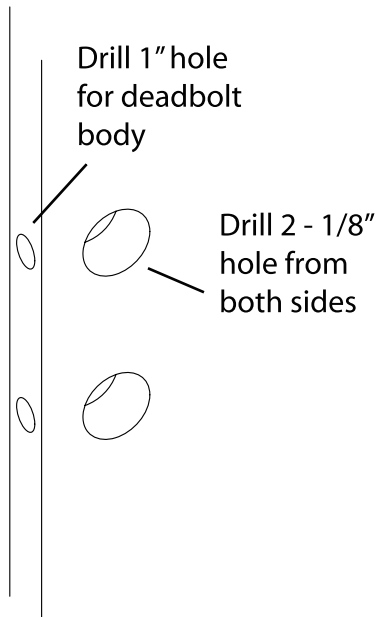
Door Thickness	Cylinder Length	Von Morris Cylinder
1-3/8"	1-1/8"	9053U
1-3/4"	1-1/4"	9054U
2"	1-3/8"	9055U
2-1/4"	1-1/2"	9056U

Prepare Door and Door Jamb



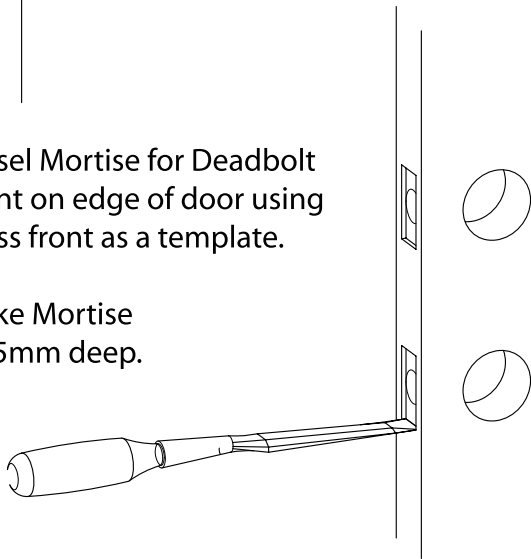
Drill the 2-1/8" cross bore from both sides of the door to avoid splintering at the face of the door.

Drill the 1" hole for the dead bolt body.



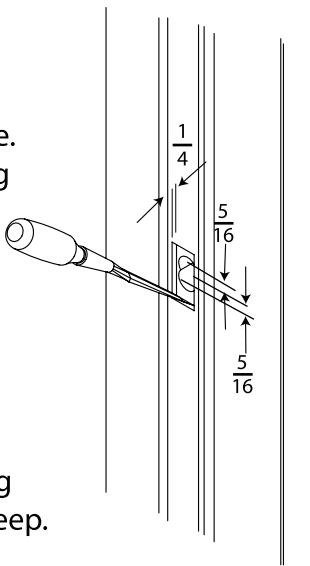
Chisel Mortise for Deadbolt Front on edge of door using brass front as a template.

Make Mortise 4.25mm deep.

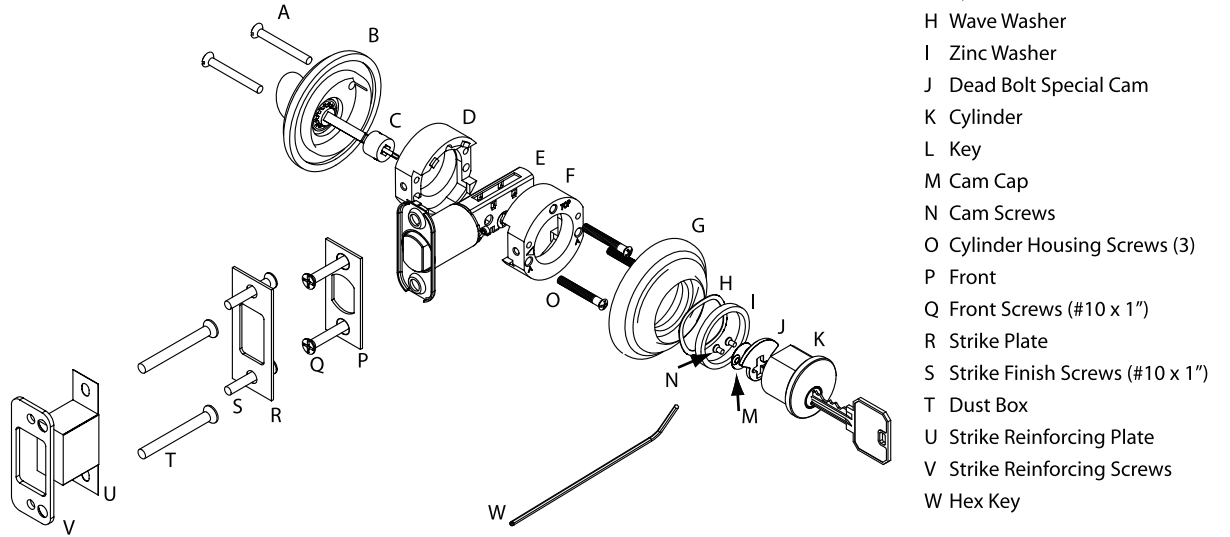


Locate Center of Deadbolt on door jamb and mark centerline.

Mark two centers 5/16" above and below the centerline. Drill two overlapping 1" diameter holes 1-1/8" deep.



Using the strike plate as a template, chisel the mortise for the strike and reinforcing plates. Mortise 1/4" deep.



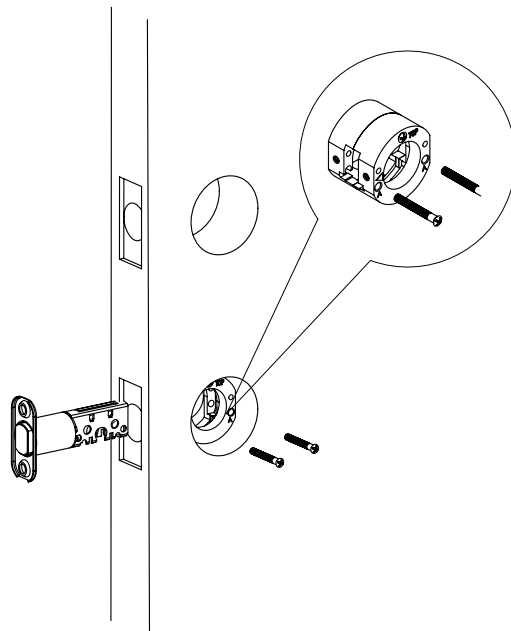
- A Turn Trim Assembly Screw
- B Turn Trim
- C Turn Adaptor
- D Cylinder Housing "B"
- E Dead Bolt Body
- F Cylinder Housing "A"
- G Cylinder Trim
- H Wave Washer
- I Zinc Washer
- J Dead Bolt Special Cam
- K Cylinder
- L Key
- M Cam Cap
- N Cam Screws
- O Cylinder Housing Screws (3)
- P Front
- Q Front Screws (#10 x 1")
- R Strike Plate
- S Strike Finish Screws (#10 x 1")
- T Dust Box
- U Strike Reinforcing Plate
- V Strike Reinforcing Screws
- W Hex Key

Install Deadbolt

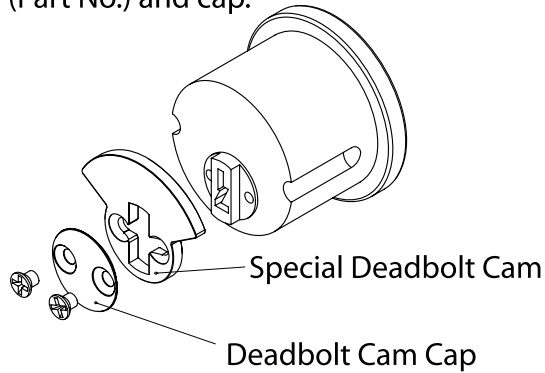
Install deadbolt cylinder housing assembly into large hole in door as shown below.

Install deadbolt body (with bolt retracted) into 1" hole in edge of door and into the deadbolt cylinder housing.

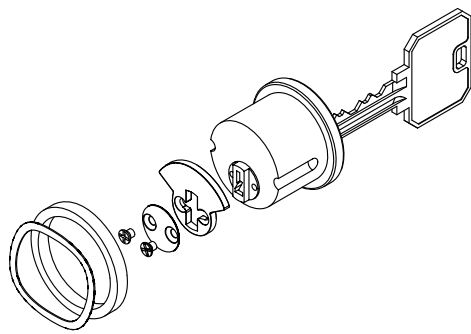
Install two screws into two holes marked "A".



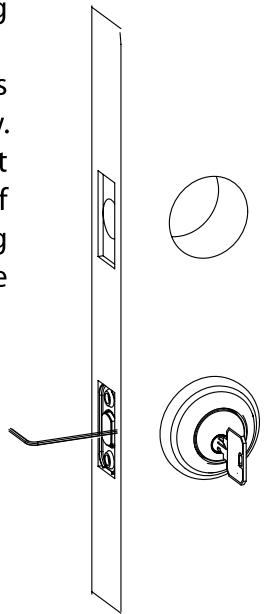
Assemble Cylinder, Special Deadbolt Cam (Part No.) and cap.



Assemble Cylinder trim, wave washer, zinc washer and cylinder. Insert key fully into cylinder and pull back "one notch". Using key, thread cylinder into housing until it stops. Do not force cylinder. Back off one revolution.

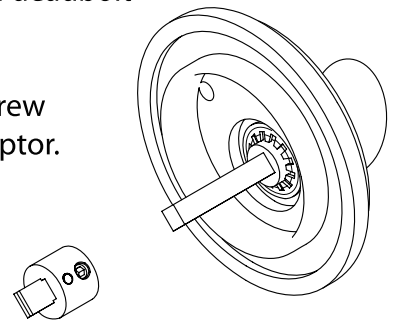


Insert Hex key along side of bolt through deadbolt body as shown below. Tighten the set screw in side of cylinder housing into the notch in the side of the cylinder.



Cut off spindle projecting from back of turn trim to allow space for adaptor to fit into deadbolt hub. (Refer to template) Attach the adaptor so that the turn piece is in vertical position when deadbolt is retracted.

Tighten set screw on side of adaptor.

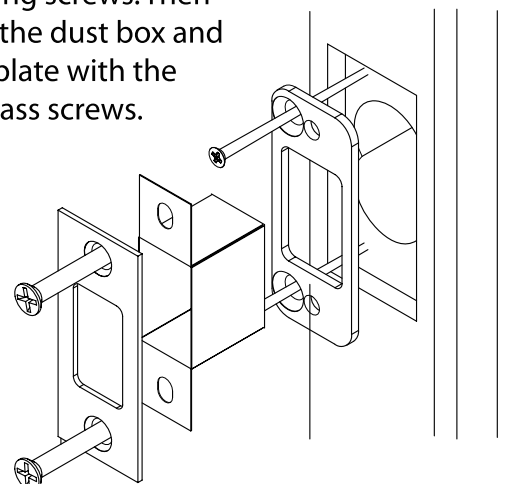


Install turn piece trim with two oval head slotted screws. Be sure to cut screws to length. (Refer to template) Installing screws that are too long will crush the deadbolt body and ruin the mechanism. When tightening the screws, be sure to center the dead bolt body between the two door faces.

Install the face plate with two screws.

Place the steel reinforcing plate into the strike mortise in the door jamb and drill two 3/16" pilot holes into the door jamb.

Install the reinforcing plate with the two 3 inch long screws. Then install the dust box and strike plate with the two brass screws.

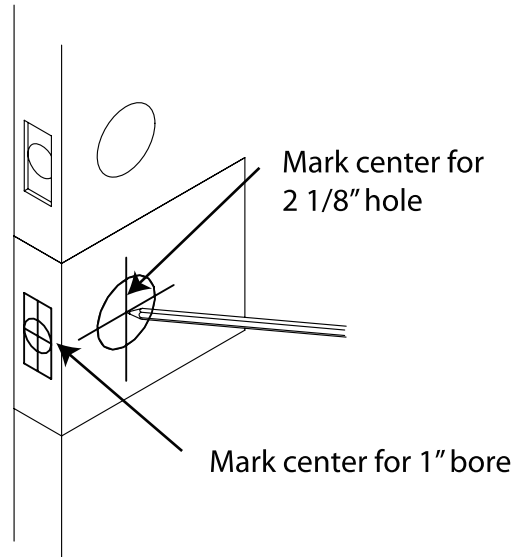




Double Cylinder Deadbolt

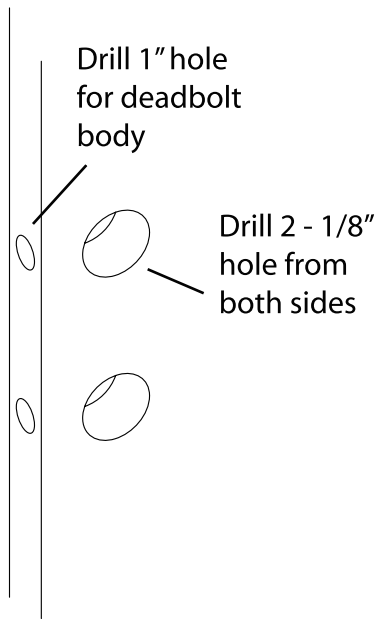
Door Thickness	Cylinder Length	Von Morris Cylinder
1-3/8"	1-1/8"	9053U
1-3/4"	1-1/4"	9054U
2"	1-3/8"	9055U
2-1/4"	1-1/2"	9056U

Prepare Door and Door Jamb



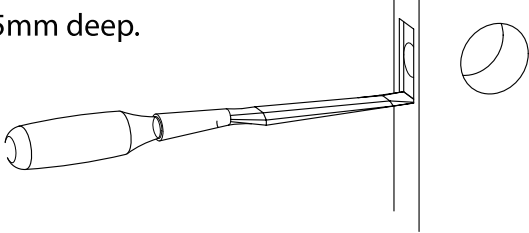
Drill the 2-1/8" cross bore from both sides of the door to avoid splintering at the face of the door.

Drill the 1" hole for the dead bolt body.



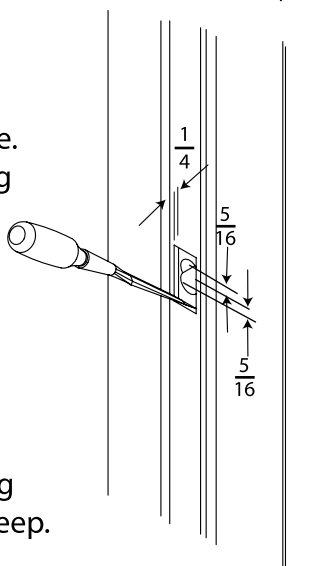
Chisel Mortise for Deadbolt Front on edge of door using brass front as a template.

Make Mortise 4.25mm deep.

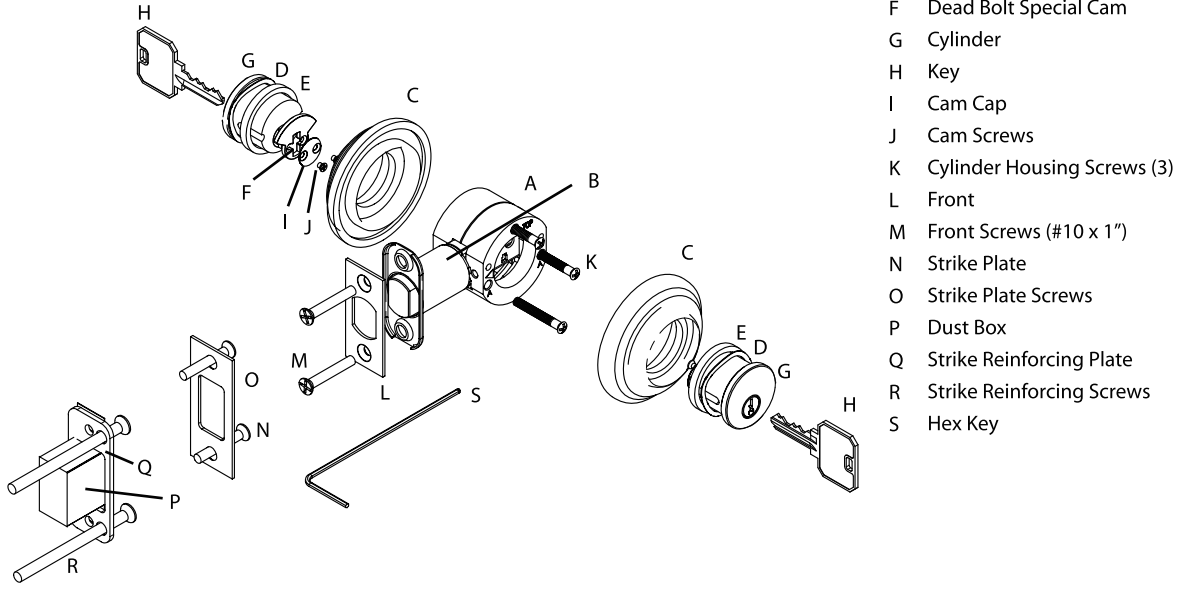


Locate Center of Deadbolt on door jamb and mark centerline.

Mark two centers 5/16" above and below the centerline. Drill two overlapping 1" diameter holes 1-1/8" deep.



Using the strike plate as a template, chisel the mortise for the strike and reinforcing plates. Mortise 1/4" deep.



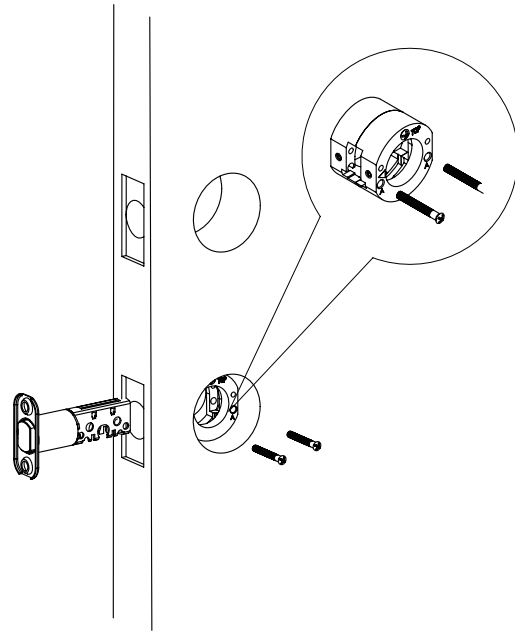
- A Cylinder Housing A & B
- B Dead Bolt Body
- C Cylinder Trim
- D Wave Washer
- E Zinc Washer
- F Dead Bolt Special Cam
- G Cylinder
- H Key
- I Cam Cap
- J Cam Screws
- K Cylinder Housing Screws (3)
- L Front
- M Front Screws (#10 x 1")
- N Strike Plate
- O Strike Plate Screws
- P Dust Box
- Q Strike Reinforcing Plate
- R Strike Reinforcing Screws
- S Hex Key

Install Deadbolt

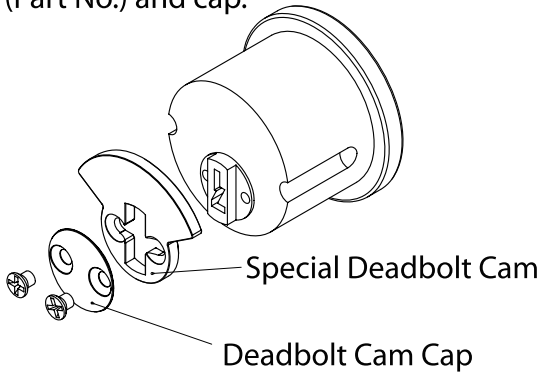
Install deadbolt cylinder housing assembly into large hole in door as shown below.

Install deadbolt body (with bolt retracted) into 1" hole in edge of door and into the deadbolt cylinder housing.

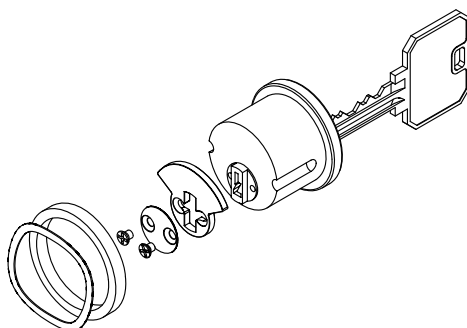
Install two screws into two holes marked "A".



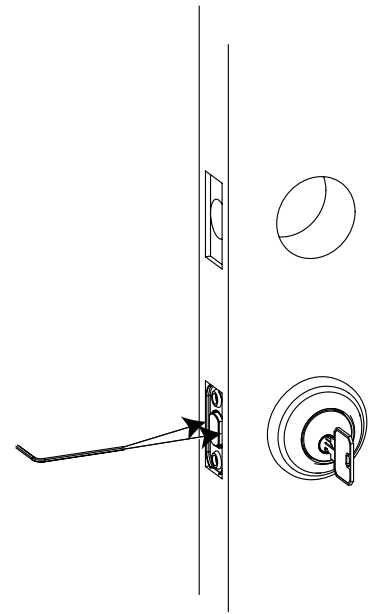
Assemble Cylinder, Special Deadbolt Cam (Part No.) and cap.



Assemble Cylinder trim, wave washer, zinc washer and cylinder. Insert key fully into cylinder and pull back "one notch". Using key, thread cylinder into housing until it stops. Do not force cylinder. Back off one revolution.



Insert Hex key along side of bolt through deadbolt body as shown below. Tighten the set screw in side of cylinder housing into the notch in the side of the cylinder.



Install the face plate with two screws.

Place the steel reinforcing plate into the strike mortise in the door jamb and drill two 3/16" pilot holes into the door jamb.

Install the reinforcing plate with the two 3 inch long screws. Then install the dust box and strike plate with the two brass screws.

