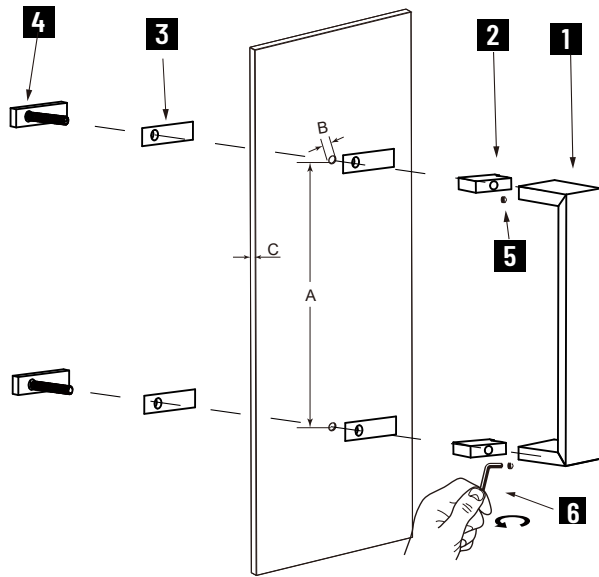


HAMBURG COLLECTION SINGLE SHOWER DOOR HANDLE

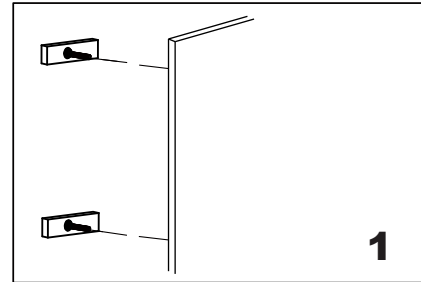
4407506/7508/7512/7518/7524



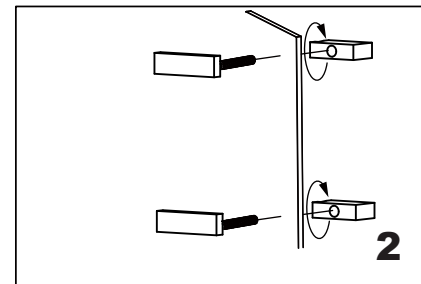
- 1.Handle A
- 2.Fixing Bracket x 2
- 3.Clear Gasket x 4
- 4.End Cap x 2
- 5.Set Screw M5 x 2
- 6.Allen Key 2.5mm x 1

GLASS INFO

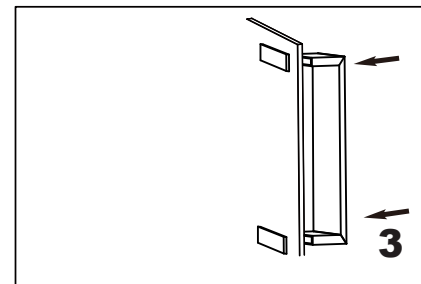
		Glass Hole C-C Distance	
A	6"/152mm	6" Shower Door Handle	
	8"/203mm	8" Shower Door Handle	
	12"/305mm	12" Shower Door Handle	
	18"/457mm	18" Shower Door Handle	
	24"/610mm	24" Shower Door Handle	
B	3/8"(10mm)	Glass Hole Diameter	
C	6-12mm	Glass Thickness	



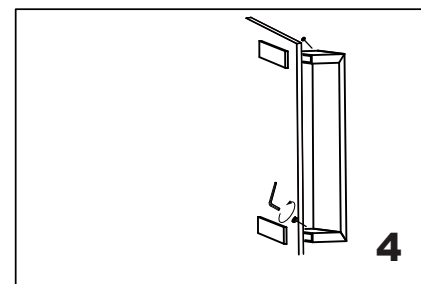
Install the end caps "4" (bolt) through the glass holes, make sure the rubber gaskets are between handle & glass.



Screw in the fixing brackets into the bolts.



Add the handle A onto the fixing brackets, make sure the set screws holes in the bottom.



Fix the set screws on the handle, tighten it to avoid loose from fixing brackets.