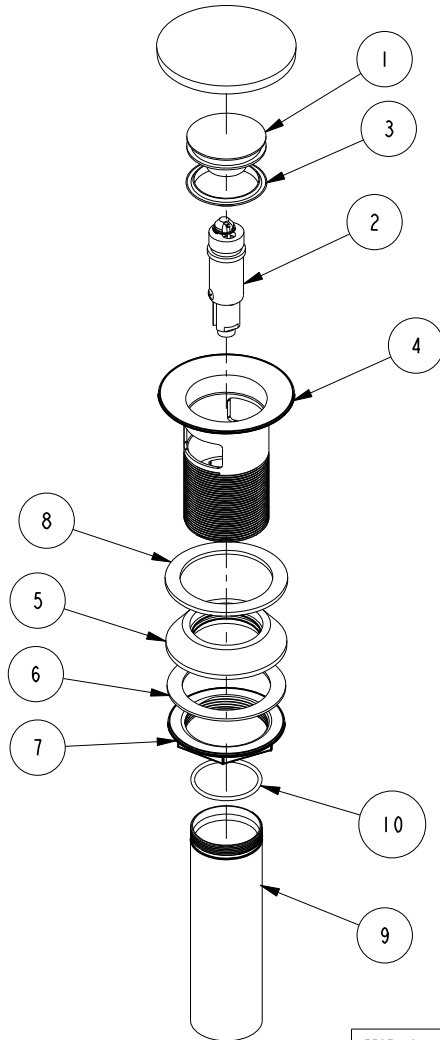


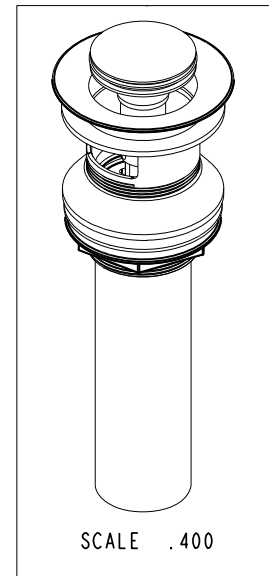
NOTES:

(NI) 1. FIT / FORM / FUNCTION SHALL FOLLOW PS-E.008.



BILL OF MATERIAL (CURRENT LEVEL)

ITEM	PT/ASSY	DESCRIPTION	TYPE	QTY.
1	12587	DRAIN CAP	PART	1
2	1-708	ACTUATOR ASM	ASSEMBLY	1
3	91696	GASKET	PART	1
4	20-284	FLANGE ASM	ASSEMBLY	1
5	91698	CONE SEAL	PART	1
6	91705	WASHER	PART	1
7	92858	LOCK NUT	PART	1
8	91641	FLANGE WASHER	PART	1
9	12588	LOWER WASTE TUBE	PART	1
10	91699	O-RING	PART	1



TESTING	-	-	-
ASSEMBLY	-	-	-
PLATING	-	-	-
POLISHING	-	NEXT ASSY	USED ON
MACHINING	-	APPLICATION	
TOOLING FIXTURE #	REMOVE ALL BURRS AND SHARP EDGES		

BRASSTECH INCORPORATED
 2001 CARNEGIE AVE.
 SANTA ANA, CA 92705
 (949) 417-5207

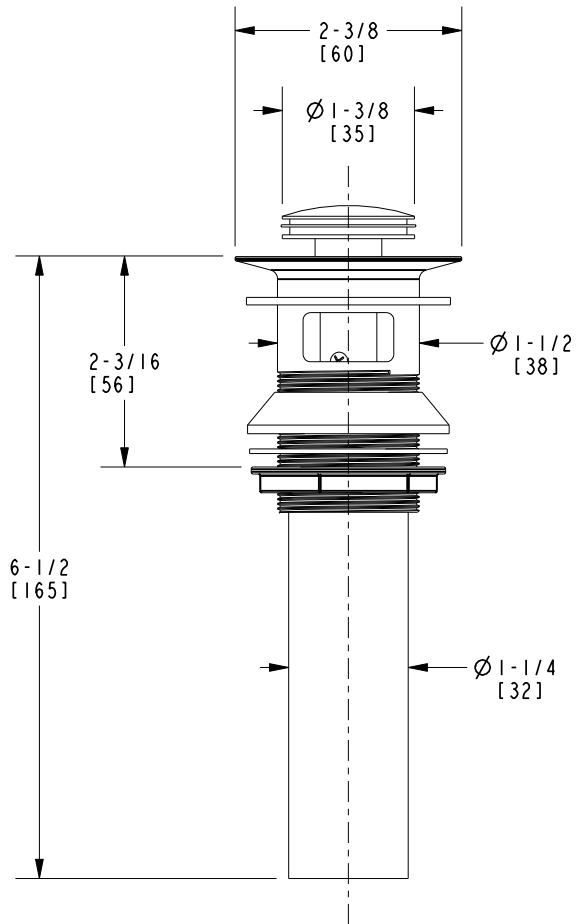
**DRAIN, PUSH DOWN,
 W/ OVERFLOW**

DWG NO. **330**

SCALE **.300** REF. - SHEET **1** OF **2**

COPYRIGHT 2005 BRASSTECH, INC.
 THESE DRAWINGS AND THE DESIGNS
 DEPICTED HEREIN ARE THE PROPRIETARY
 PROPERTY OF BRASSTECH. ANY USE
 OR REPRODUCTION IS SUBJECT TO
 THE EXPRESS APPROVAL OF BRASSTECH.
 UNAUTHORIZED USE IS STRICTLY
 PROHIBITED. ALL RIGHTS RESERVED.

ZONE	REV	DESCRIPTION	DATE	APPROVED
-	A	EN-3563	03/26/18	V.V.
-	-	EN-3152	10/26/16	V.V.



BRASSTECH		2001 E. CARNEGIE AVE. SANTA ANA, CA 92705 (949) 417-5207	
INCORPORATED			
DWG NO.	330	REV	A
SCALE .500	REF. -	SHEET 2	OF 2